

International Conference Series: Conference of the Americas

The Therapeutic Dyad Enlivened by Process, Theory, and Supervision: Three Different Approaches – Three Live Takes

Saturday, September 25, 2021

12:00pm – 5:00pm EDT

Self
 Psychology

Relational
 Psychology

Kleinian /
 Bionian
 Psychology

The Program:

Conference attendees will witness three completely separate, spontaneous and unrehearsed supervisions of the same case presentation offered by **Joana Cruz MA, LMFT**. A short time before the conference the presenting clinician will be filmed in separate individual sessions discussing identical process material with three different senior Supervisors: one Supervisor using a Self Psychological approach (**Dr. Allen Siegel**), the second using a Relational approach (**Dr. Hazel Ipp**) and the third a Kleinian/Bionian approach (**Dr. Barnet Malin**).

This highly unique format will allow attendees to observe and compare how different approaches to supervision affect the same clinical material, altering meaning and understanding of identical content in each of the three dyads. Envisioning en vivo this undeniable influence of the supervisor's particular psychoanalytic approach on meaning and feeling in the dyad, the community as an entirety may more clearly apprehend the value of psychoanalytic pluralism to clinical understanding, as well as perceiving the absence of a singular theoretical truth in regard to psychoanalytic theory.

Following the presentation of the filmed interviews, all of the participants, including the three supervisors, the presenter, and the moderator, **Dr. Jill Gardner**, will assemble to discuss among themselves and with the audience how theory affects technique.

IAPSP will be producing video and/or audio recordings (the "recordings") from this event. These recordings may be used by IAPSP for future educational purposes only. If you participate in the program and have your video / audio on, be advised that the recordings may contain your recognizable image, name and/or voice. The content of the recording will be owned by IAPSP and will not be available to the public. By participating in the program, you give your implied consent to your image, name or voice to be used.

Schedule: (all times listed in EDT)

- **12:00:** Conference begins
- **12:10 - 1:50pm:** Videos of the three supervision sessions will be shown, with a short break between each.
- **1:55 - 2:45pm:** Panel discussion, including audience Q&A
- **2:45 - 2:55pm:** Break / participants move to breakout discussion groups
- **2:55 - 3: 40pm:** Breakout discussion groups
- **3:45 - 4:55pm:** Panel discussion, including audience Q&A
- **5:00pm:** Conference ends

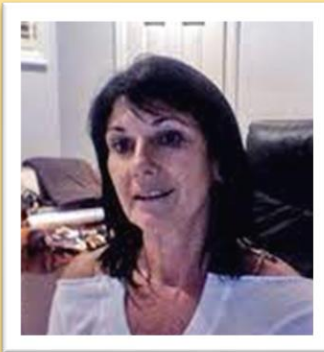
About the Speakers:



Joana Cruz is completing her PsyD in psychoanalysis through the Institute of Contemporary Psychoanalysis in Los Angeles. She has a full time private practice on the West side of LA.



Allen M. Siegel is a psychiatrist in Chicago, Illinois. He received his medical degree from University of Illinois College of Medicine. He is the author of *Heinz Kohut and the Psychology of the Self*, published by Routledge. He is an Associate Editor with the journal: *Psychoanalytic Inquiry*. He is the American Director of the Anatolia Association for the Psychoanalytic Psychotherapies in Turkey and is Faculty at the Self Psychology Education Project in China. He is an Assistant Clinical Professor of Psychiatry (ret) at the Rush University Medical Center in Chicago, and is an International Council Member of IAPSP.



Hazel Ipp is a psychologist psychoanalyst in private practice in Toronto, Canada. She is a Founding Board Member, Faculty and Supervisor of the Toronto Institute for Contemporary Psychoanalysis. She also serves on the Faculty of the Toronto Institute for Child Psychoanalysis and ISIPse (Rome). She is Editor-in-Chief Emeritus of *Psychoanalytic Dialogues* and serves on the Editorial Boards of *Contemporary Psychoanalysis* and *Psychoanalysis: Self and Context*. She is a Founding and current Board Director and Past President of the International Association for Relational Psychoanalysis and Psychotherapy. She regularly teaches, supervises and presents nationally and internationally.



Barnet D Malin is a psychoanalyst and psychiatrist in Santa Monica, CA, now retired from clinical practice. He earned an MD from Columbia University, served his medical internship at Cedars Sinai Hospital in Los Angeles, his psychiatry residency at UCLA, and took his psychoanalytic training at the Los Angeles Psychoanalytic Society and Institute. He is senior faculty and a Supervising and Training Analyst at the Psychoanalytic Center of California (PCC) and the New Center for Psychoanalysis (NCP), both in Los Angeles. He is an Associate Clinical Professor of Psychiatry at UCLA, and teaches at the UCLA Geffen School of Medicine, the UCLA psychiatry residency, and at the PCC and NCP. He has presented original work locally, nationally and internationally, and has authored and co-authored professional papers and books. His forthcoming book, *Questioning Bion's O Concept*, will be published by Routledge.

Continuing Education:

This conference is intended for psychoanalysts, psychiatrists, psychologists, social workers, psychiatric nurses, marriage and family therapists, professional counselors and clinical professional counselors, including graduate level trainees, at all levels of experience.

4.5 CEs will be awarded based on confirmed attendance of the entire event. Evaluation forms will be sent to all attendees post conference; after which continuing education credit will be sent.

Note: CE credits are only awarded to those who attend the live conference. Watching the recorded conference at a later time is not eligible for CE credit.

Continuing education:

Physicians: This activity has been planned and implemented in accordance with the accreditation requirements and policies of the Accreditation Council for Continuing Medical Education (ACCME) through the joint providership of ICP+P and IAPSP. ICP+P is accredited by MedChi, the Maryland State Medical Society to provide continuing medical education for physicians. ICP+P designates this educational activity for a maximum of 4.5 AMA PRA Category 1 Credit(s)TM. Physicians should only claim credit commensurate with the extent of their participation in the activity.

Psychologists: ICP+P is approved by the American Psychological Association to sponsor continuing education for psychologists. ICP+P maintains responsibility for this program and its content. ICP+P designates this educational activity for a maximum of 4.5 credit(s).

Social Workers: The International Association for Psychoanalytic Self Psychology (IAPSP) is recognized by the New York State Education Department's State Board for Social Work as an approved provider of continuing education for licensed social workers. #SW-0232. Approval for LMSW & LCSW in NYS is 4.5 Contact Hours. This program is pending approval by the National Association of Social Workers for 4.5 continuing education contact hours.

Registration:

Please visit the IAPSP website for the online registration form:

Conference Website:

[Conference of the Americas](#)

Registration Link:

[IAPSP Conference of the Americas Registration](#)

Learning Objectives:

After attending this conference, participants will be able to:

- i. Describe the changes in understanding the patient's mental state that are revealed in the short clinical vignette, depending on whether a Self Psychological, Relational or Bionian/Kleinian approach is applied.
- ii. List three distinctions detected among Self Psychological, Relational and Bionian/Kleinian concepts.
- iii. Expand their knowledge about the process of clinical supervision by observing, comparing and listing three ways in which the styles and approaches of the three different senior supervisors reflect their different psychoanalytic perspectives.
- iv. List two or more elements that seem essential to developing comfort in the supervision dyad, noting how each of the three different perspectives either incorporates or fails to incorporate these essential elements.

Fees and Policies:

	IAPSP Member	Non-Member
Professional:	\$85	\$105
Student, Candidate, Early Career Professional *:	\$45	\$55
Fees Based on Geographic Area**:		
South America (excluding Argentina):	\$35	
Argentina:	\$25	
Central America / Mexico / South Africa / Turkey / Iran:	\$35	

***Early Career Professionals are in practice for less than 5 years and have completed graduate school in 2016 or later.**

**** Fees based on Geographic areas are for any registrant from the countries / areas listed, regardless of membership or professional status.**

Refund / Cancellation Policy: Refunds will be given less a \$15 administration fee if received in writing via email or mail by September 15th, 2021. No refunds will be given for cancellations after September 15, 2021.

Planning Committee: Christina Connell, RP, Jill Gardner, Ph.D, Daniel Perlitz, MD, Estelle Shane. Ph.D